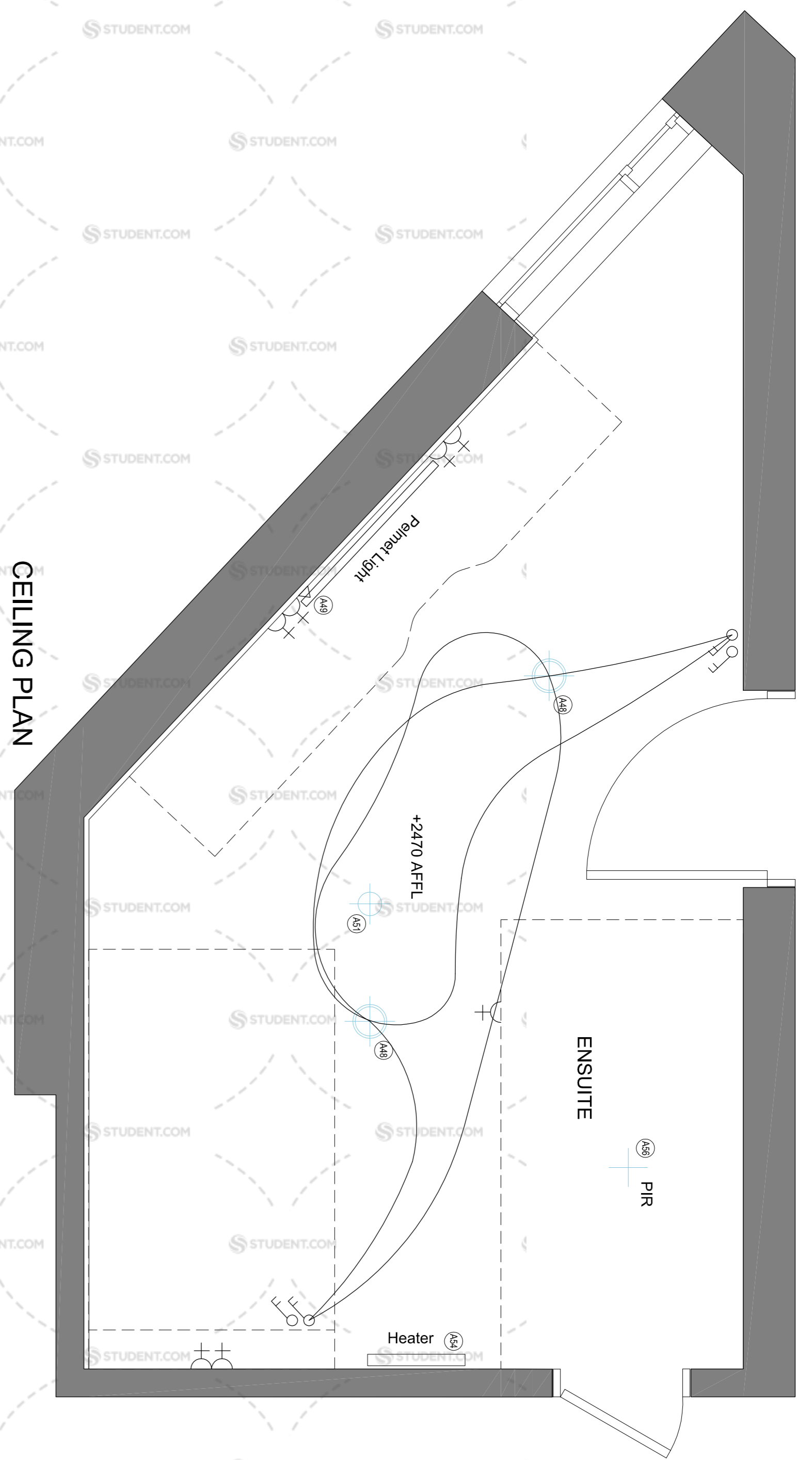


PLAN

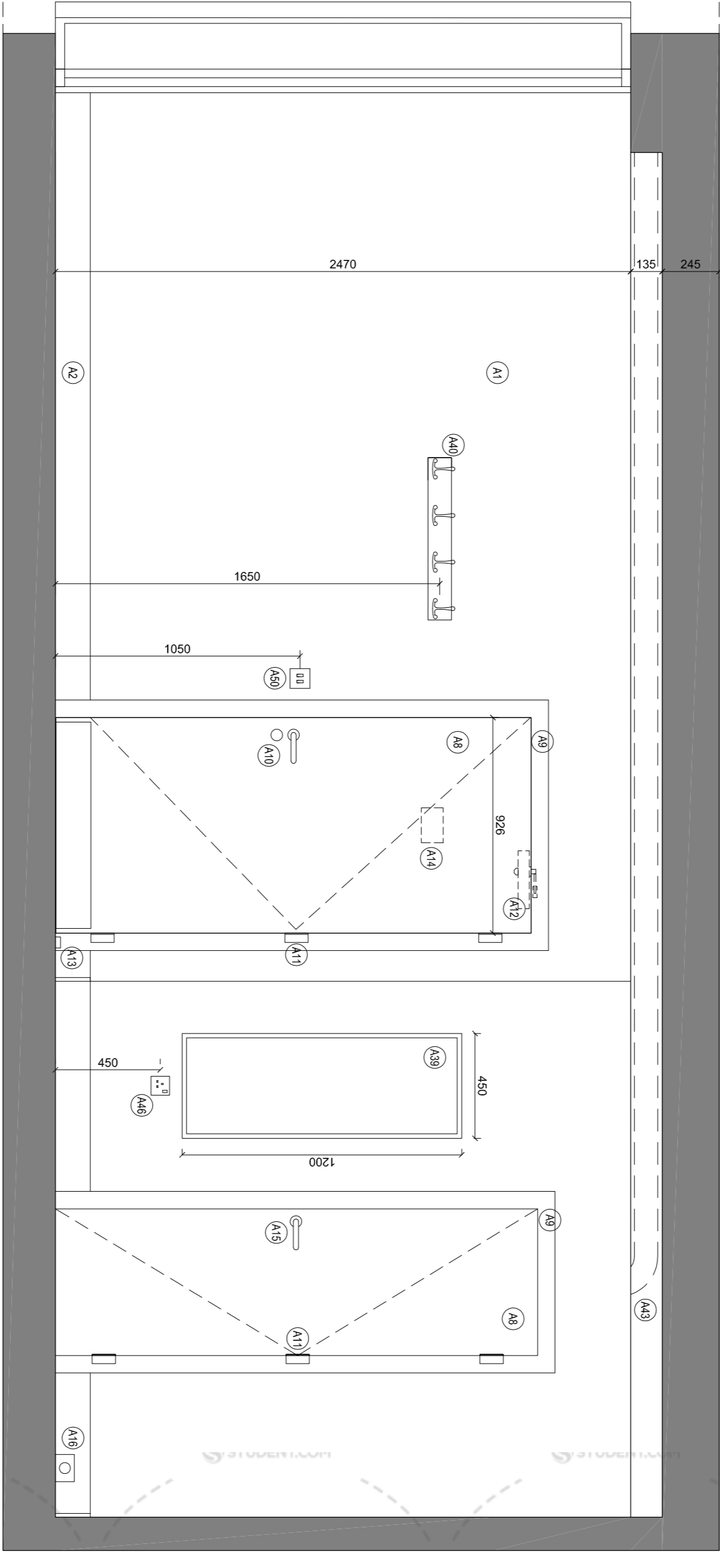
CEILING PLAN



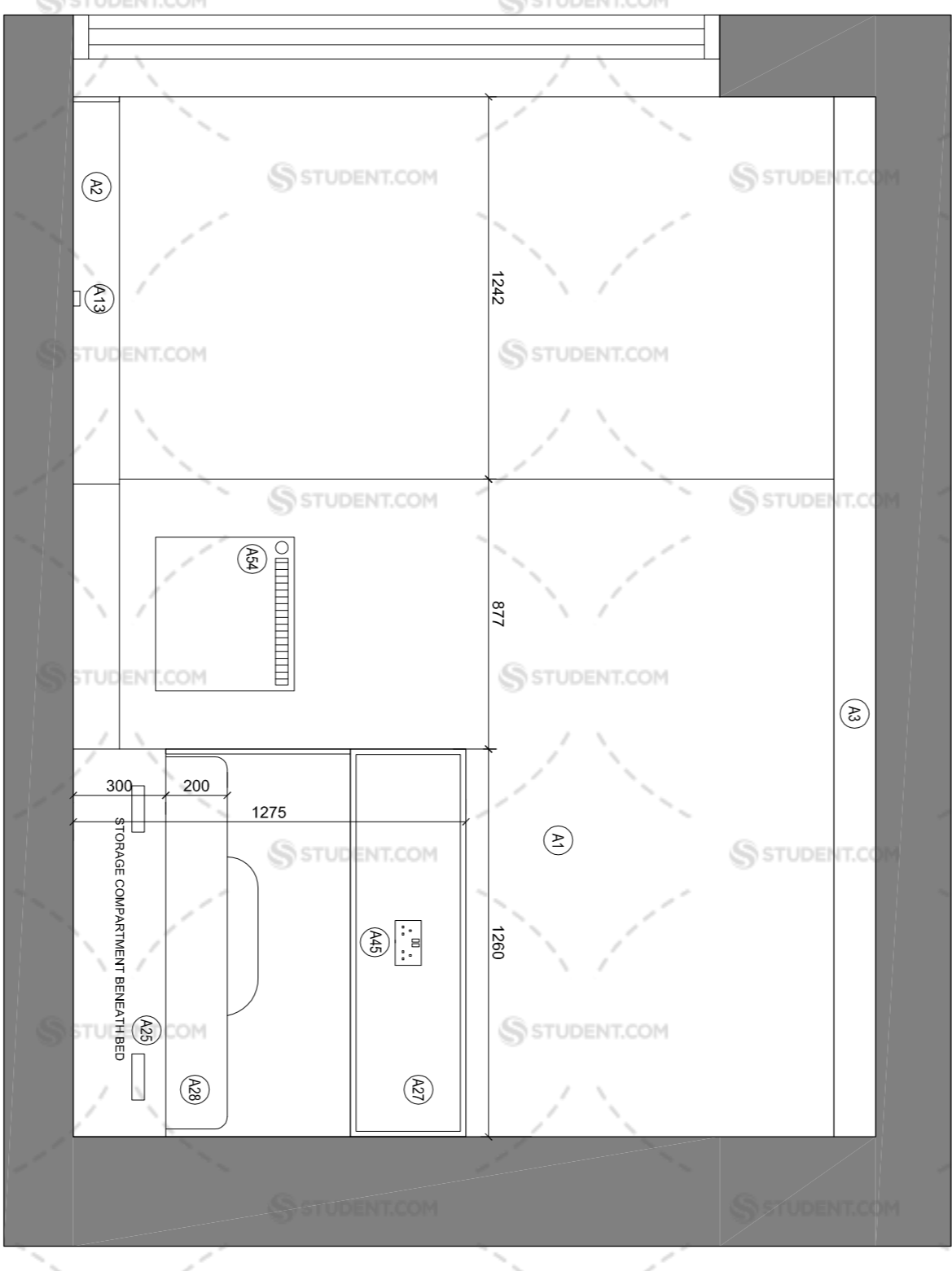
LEGEND

- A1 Drilled, to receive paint/finish
- A2 Shiring, 150 x 15mm panel round, to receive paint finish
- A3 Dry-lined, to receive paint finish
- A4 Timber effect vinyl
- A5 Refer to window specification and drawings
- A6 Opening vents to be installed (generally) to provide ventilation in accordance with the relevant Building Regulations (Part L2) and to provide access for safe opening from the inside.
- A7 100mm Integral Resistor with key override (subject to Client / CDMC approval) fitted with tamperproof screws
- A8 Timber veneered doorset with gained SW door frame OR Timber effect HPL tiled doorset (in painted steel door finish)
- A9 75 x 15mm architrave, to receive paint finish
- A10 Strainstone (battery powered) DDA Compliant FR Electronic Lock with RFID technology with additional single cylinder lock for manual override
- A11 Hinges 1 | Pairs
- A12 Overhead door closer
- A13 Floor mounted door stop
- A14 Timber veneered door set with gained SW door frame OR Timber effect HPL faced doorset with painted steel door frame
- A15 75 x 15mm architrave, to receive paint finish
- A16 Lever (tact) and extended pull bar on inside for disabled use
- A17 Hinges 1 | Pairs
- A18 Strong rounded door stop furniture with HPL finish to include different colour/finishes - refer to indicative furniture types. Soft Close drawers and hinges (120° hinges)
- A21
- A22
- A23 Cabin bed 3400(N) x 1280(W) x 1950(J)mm O/A Frame Dimensions
- A24 Under bed storage
- A25 2 no. Ventilation grilles within the foot panel
- A26 Wall Protection Panel to wall side of bed 400(N) x 1950(J)mm
- A27 Bedhead shelf unit with integrated power 1275(N) x 720(W) x 200(J)mm
- A28 4 Escape-Proof Mattress (200mm up) with 12.5 gauge springs, red edges and 4' Spunbond Anti-Allergy Mattress Protector
- A29 28mm Thick HPL, R/L Pedestal Desktop, 1500(W) x 600(J)mm with 75(J)mm upstand to match desk
- A31
- A32
- A33 Chrome Support Leg
- A34
- A35 Wardrobe - 2200(N) x 1000(W) x 600(J)mm inc. 100(J)mm plinth. Centre divide with high and low level hanging rails to one side, 3 no. shelves to the other
- A36 Wall mounted bookshelf - 1500(W) x 475(N) x 300(J)mm over desk with painted shelf to match desktop
- A37 Fabric covered pinboard above bed - 'Wallside of bed' / 1200(N) x 1950(J)mm or Bedhead 825(N) x 1280(J)mm (W)mm above desk
- A38 Fabric covered pinboard above bed - 'Wallside of bed' / 1200(N) x 1950(J)mm or Bedhead 825(N) x 1280(J)mm (W)mm above desk
- A39 Framer mirror 1200(N) x 450(J)mm to match bedroom furniture
- A40 4 no. Hatcoat hooks mounted on wall plate to match bedroom furniture
- A41 FR Backout Catalans and associated track to suit window aperture
- A42 Track to extend 150mm past window aperture or return to wall
- A43 Each pod to be individually ventilated to an external grille (5L/second)
- A44 DSSCO independent within bed head
- A45 SSSCO adjacent to mirror
- A46 Data Outlet adjacent to desk
- A47 Lighting to achieve general luminance levels of 100lux and 300lux above the desk level LED task lighting
- A48 2 no. 2-Way light switches (by bedroom door and at bed-head) operating main light fittings & Palmetto light.
- A49
- A50
- A51 L-Fire alarm sounder bases and smoke detectors as detailed in M & E Specification. This item will be covered in the follow-on stage F warrant
- A52 Pod heating system within the ensuite pod services task
- A53 Electric heating system to be suitable sized to meet Building Regulations (Scottish Technical Handbook Section 6 & SEMA) as detailed in M & E Specification. Panel heaters with thermostat and 3 hour set back timers set to SOC. This item will be covered in the follow-on stage F warrant
- A54
- A55 Heater Base
- A56 1 no. FR light controls set in ensuite ceiling

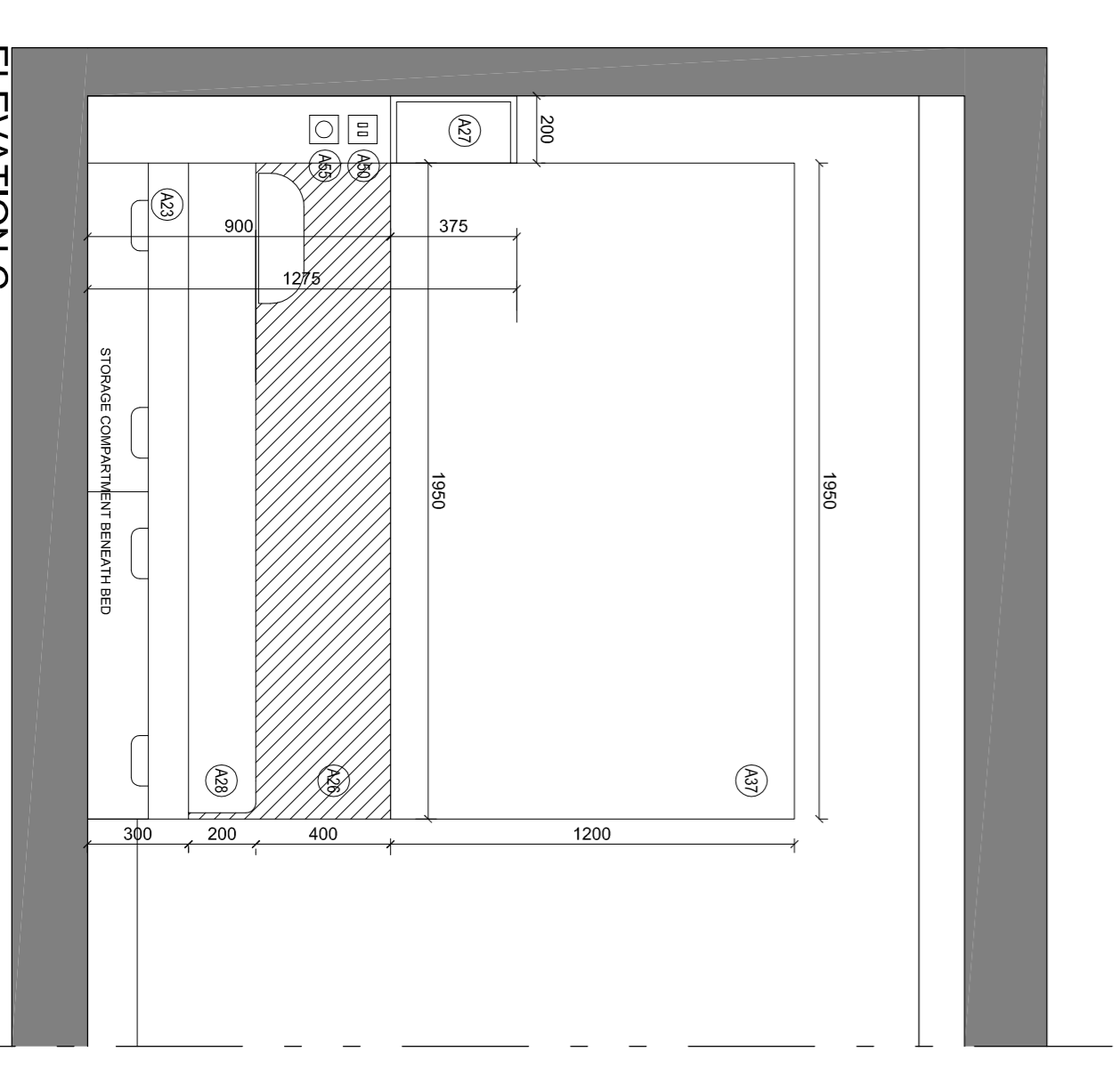
Revision  
 A 24.07.14 Drawers removed from below desk  
 Wardrobe dimensions increased  
 Mirror located opposite wardrobes  
 on pod wall  
 B 29.08.14 Vertical dimensions adjustment.  
 Thickness wall amended  
 C 12.09.14 Added Reflected Ceiling Plan +  
 Electrics & Lightings  
 D 17.09.14 Additional light switch connection  
 shown on ceiling plan  
 E 03.11.14 Wardrobe width amended (1000mm).  
 Wardrobe and heater relocated.  
 Tall Storage Unit width amended (550mm)  
 & relocated next to desk.  
 Legend amended.  
 PIR added to shower pod.  
 Switches/ sockets level raised to 450mm  
 above FF.L.  
 NOTE: WINDOW ELEVATIONS  
 ARE INDICATIVE



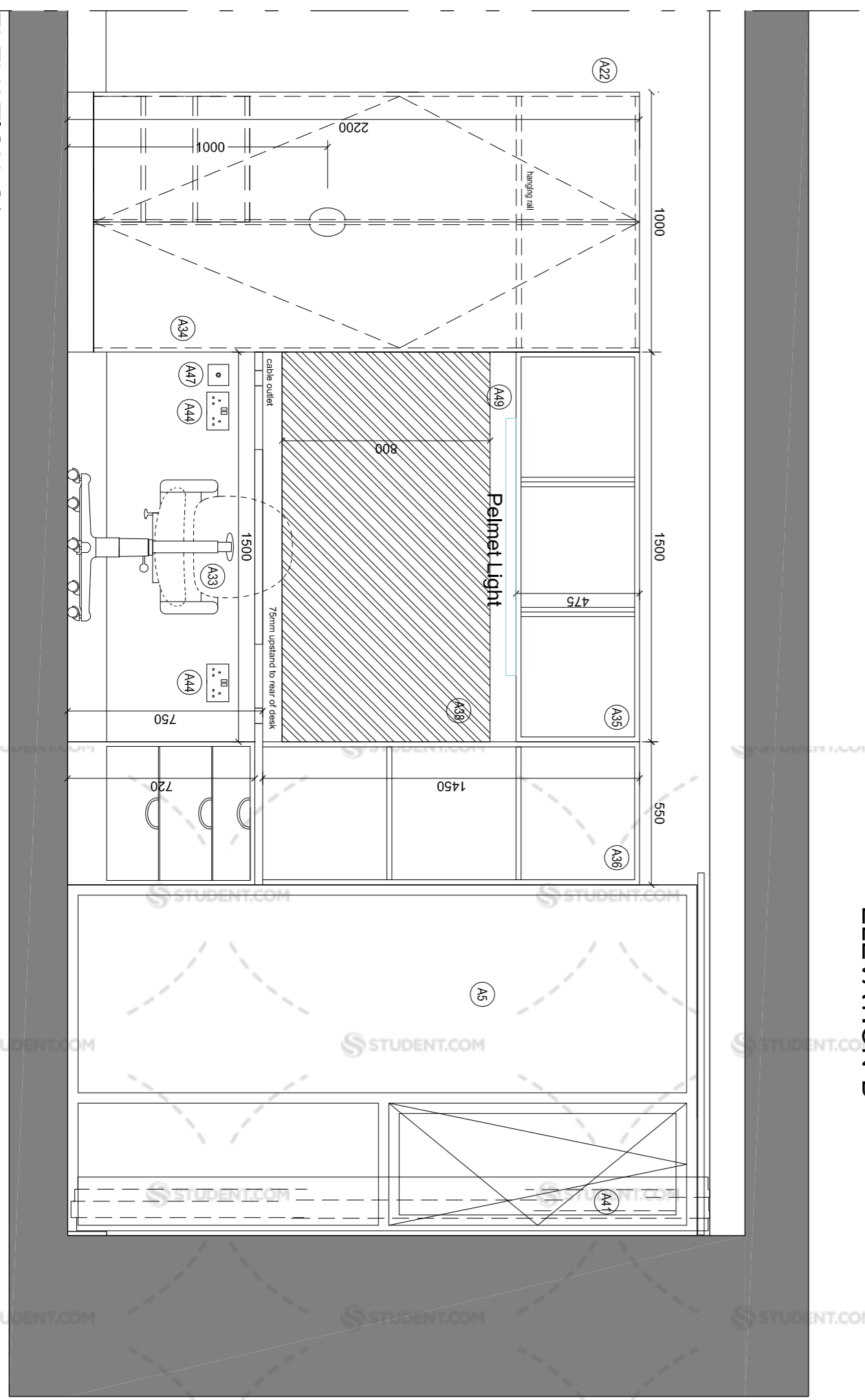
ELEVATION A



ELEVATION B

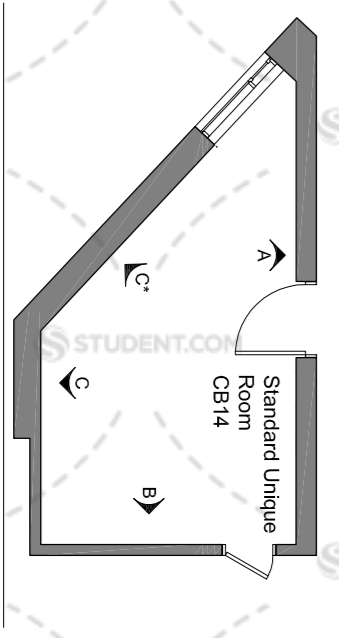


ELEVATION C



ELEVATION C\*

KEY PLAN



Scale of Metres - 1:20

**Manson Architects**  
 Henderson Road  
 10 Bellair Road  
 Edinburgh EH4 3BL  
 T: 0131 225 2656  
 F: 0131 226 2716  
 E: info@mansonarchitects.co.uk  
 www.mansonarchitects.co.uk

**Watkin Jones**

Client	Aberhill Student Residences
Project	Aberhill Student Residences
Drawing Title	Level 01 Plan
Date	12.09.14
Issue Status	PRELIMINARY
Drawing No.	1975_606
Scale	1:20 @ A1
Drawn	MVO
Rev.	E

Project: Aberhill Student Residences  
 Drawing Title: Level 01 Plan  
 Date: 12.09.14  
 Issue Status: PRELIMINARY  
 Drawing No.: 1975\_606  
 Scale: 1:20 @ A1  
 Drawn: MVO  
 Rev.: E

Drawing Office:  
 11 South Tree Street  
 Edinburgh EH4 3BL  
 T: 0131 226 2656  
 F: 0131 226 2716  
 E: info@mansonarchitects.co.uk  
 www.mansonarchitects.co.uk

London Office:  
 100 Abchurch Lane  
 London EC4N 3DF  
 T: 020 7417 4000  
 F: 020 7417 4001  
 E: london@mansonarchitects.co.uk  
 www.london.mansonarchitects.co.uk

All dimensions are shown to be rounded to the nearest millimetre unless otherwise stated. All dimensions are shown to be rounded to the nearest millimetre unless otherwise stated. All dimensions are shown to be rounded to the nearest millimetre unless otherwise stated. All dimensions are shown to be rounded to the nearest millimetre unless otherwise stated.